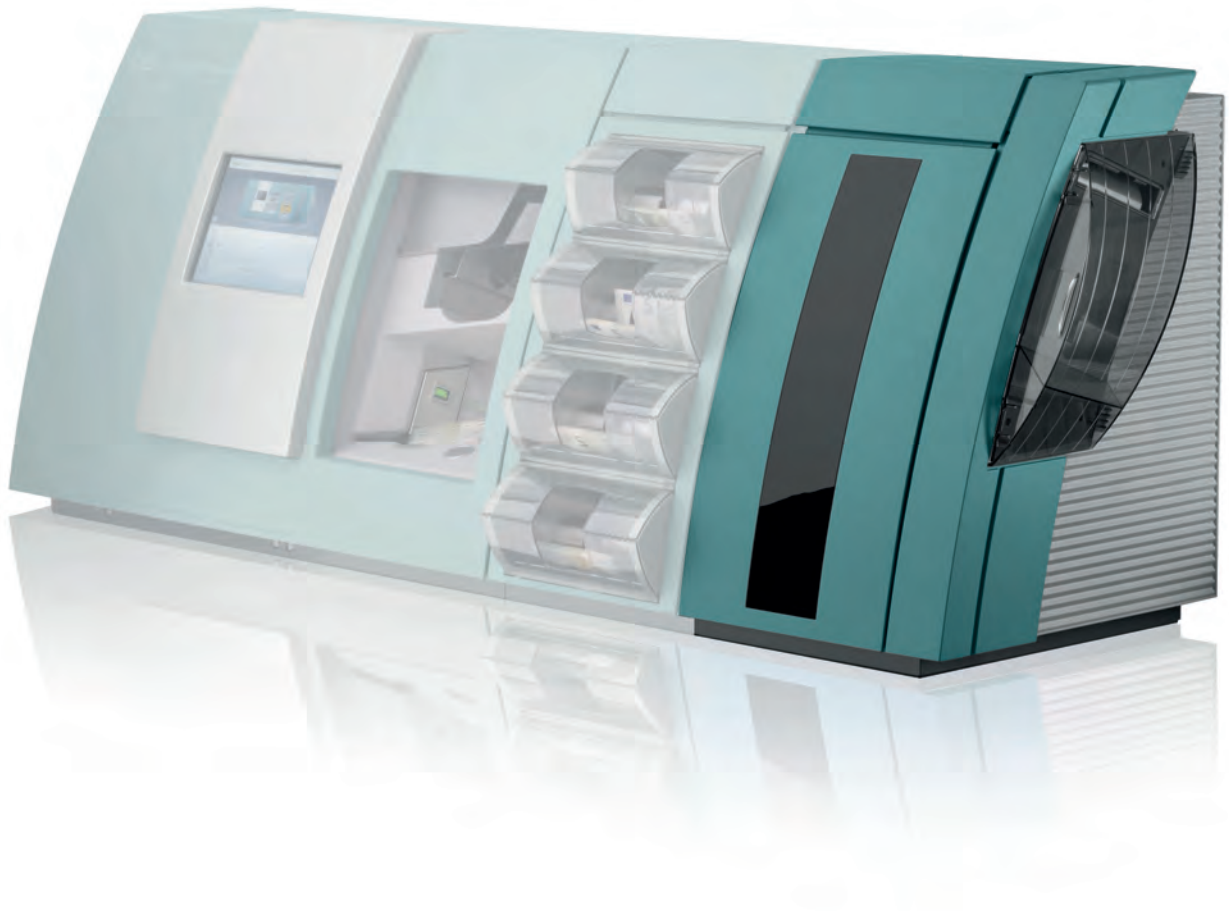
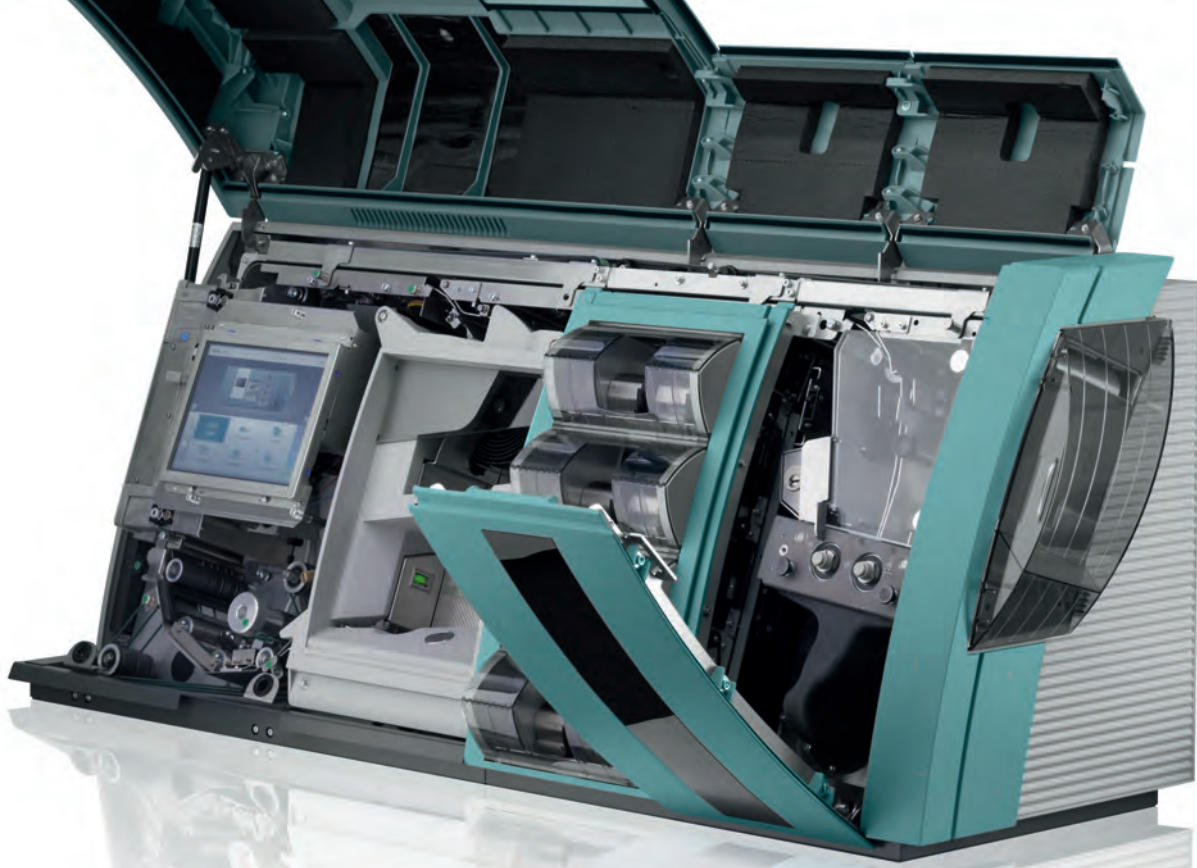


Shredder – Option for the BPS® C4

The compact solution for central bank cash centers



Giesecke & Devrient
Creating Confidence.



Online shredder: More security and efficiency

Giesecke & Devrient (G&D) is the world's leading provider of advanced security solutions for banknote production, processing, and destruction. Our banknote security solutions and integrated cash center solutions enable superior efficiency and ensure quality and reliability along the entire cash cycle. That is why around 150 central banks, over 50 banknote printing plants, and more than 3,000 commercial cash center operators trust G&D to meet their banknote handling needs.

BPS C4: Painless productivity

The compact BPS C4 is bursting with features for optimizing workflows, cutting costs, and improving productivity in banknote processing. Adding an online shredder makes it even more valuable to central banks.

Your benefits

- Extremely versatile and flexible
- High throughput and low processing costs

- Durability and high availability
- Smart, easy-to-operate system
- Ergonomically designed
- Maximum security
- Optimum maintenance
- Lowest footprint in the market

BPS C4-S: Supercharge your cash center

The BPS C4-S was specifically designed for central banks, with an integrated shredder for significant efficiency improvements in banknote

processing. It perfectly fits for small cash centers: Combining high performance with a small footprint, the BPS C4-S is the ideal choice for small processing quantities. Unfit banknotes will be destroyed online, reducing transport costs, and additional process steps and as a result significantly reducing the risks for manipulation. Alternatively BPS C4-S complements the BPS M7 in large cash centers and can effortlessly handle sudden spikes in workload.

Cogent advantages

The integrated shredder in the BPS C4-S makes reliable, automated, fully monitored destruction of unfit banknotes a standard step in banknote processing.

High-performance online shredder

Unfit banknotes are automatically detected, separated, and destroyed. Different series can also be sorted or shredded separately.

Cutting-edge sensor technology

Individually configurable sensors for absolutely reliable denomination, authenticity, and condition detection.

Seamless reporting

Additional reports provide seamless monitoring and documentation comparable to our high-performance BPS M7. They provide a detailed overview of all shredded banknotes, including quantities and denominations, to prevent discrepancies from occurring.

Secure administration

A password-protected sign-in process and the granular assignment of user rights represent a highly effective barrier for stopping intruders.

Reliable 4-eye principle

The high-security area can only be opened if two authorized users work together.

Maximum data security

A thorough restart process prevents data loss if the power supply or a component fails.

Level 3 sensor compatibility

In addition to its standard set of sensors, the system also supports high-level authenticity sensors for detection of Level 3 features. BPS C4-S is also compatible to third-party sensors.

Flexible suction and disposal management

The BPS C4-S can be combined with G&D's systems for extracting and compacting banknote shreds (BDS SC, DAG II, etc.).

System versions



BPS C4-4 S



BPS C4-7 S



BPS C4-8 S



BPS C4-11 S



BPS C4-12 S



BPS C4-15 S



BPS C4-16 S

The ideal end-to-end solution for small central bank cash centers



Giesecke & Devrient GmbH
Prinzregentenstrasse 159
P.O. Box 80 07 29
81607 Munich
GERMANY
Phone: +49 (0) 89 41 19-0
Fax: +49 (0) 89 41 19-85 20
www.gi-de.com

© Giesecke & Devrient GmbH, 2014.
BPS® is a registered trademark
of Giesecke & Devrient GmbH.
All technical data subject to change.

Technical Data

Banknote shred size

1.5 x 16 mm²
(conforms to Security Level 4
under DIN/EN 32757-1)

Extraction system

- Pipe diameter: 80 mm
- Required air flow: 12–20 m/s

Dimensions

- Length: 1,545–2,405 mm (approx.),
depending on configuration
- Width: 515 mm
- Height: 610 mm
1,200 mm when base
module lid is open

Weight

150–240 kg
(depending on configuration)

Max. power consumption

1,350–1,500 W
(depending on configuration)

See the BPS C4 brochure
for more technical data